



# Securing Gmail and AI

- ▶ · · È, Ñð' û~Ñµ, »È Ñž' ûžµç« Ñ±¾» È ÑÑ+Z

# Overview

---

\* μ" žŃ ûĆ" ŃÈŃ μ' Ý~ μŃ~ Ń, û™µŃ@ û»Ń ûøµ¿ Ýû~ ±"

\* μ" žŃ ûĆŃÈŃ" µŃ ŃÈ±ûĆ



# Cybersecurity Recent Attacks

---

## 'Not a system glitch': Cyber attack in Saint Paul, Minnesota under investigation



**Anthony Robledo**  
USA TODAY

July 29, 2025 | Updated July 30, 2025, 9:47 a.m. ET

---

## Groversville hit by ransomware attack

By WNYT

Updated: October 26, 2025 - 6:22 PM

Published: October 26, 2025 - 9:47 AM

---

## Michigan City works to restore systems after ransomware incident

by WSBT 22 | Fri, October 10, 2025 at 11:05 AM

Two 'Russian' Ransomware Attacks Take Down North Carolina City And County Government Systems

Mecklenburg County Ransomware Attack

The New York Times

*'Dangerous Stuff': Hackers Tried to Poison Water Supply of Florida Town*



# Do We Really Need To Go Through All This?

+С™μ̃ ûžžû' ÿμ̃" Ĩžžû' ÿĨÈ³/μ̃, · μ, žĨ  
 · È̃ μĨ≈û, Ĩ, ЃĨž≈μ̃ Ĩ ±Ý" ž̃ ЃО

- ▶ ННᵇ ĨøĨС™μ̃ ûžžû' ÿ" Ĩû̃ ħ μžĨ Ý, » » ûθžμ" О
- ▶ ^ È̃ μĨ≈û, Ĩᵇᵇ ĨøĨû, " È· F û̃ μĨžžû' ÿ" Ĩû̃ ħ μžĨ  
 " žûžμᵇÈ' ûθĨÈ³/μ̃, · μ, žО
- ▶ \_ ûžžÈ, Ĩžûžμ" Ĩ" ^ μ' »ûᵇᵇÿμĨÈĨû̃ ħ μžĨ  
 · Ý, » » ûθžμ" О
- ▶ ' ' μ" " ĨÈĨ" μ̃Ĩ̃ μ±μ, žû€ ĨÈ, ž» Ýμ" ĨÈĨ, ' ~ μû" μО
- ▶ Eû' ÿμ̃" ĨÈ, ž» ÝμĨÈĨᵇ ^ €žĨÈøžF û̃ μĨ  
 ³/4Ý€ μ̃ û™ᵇžμ" Ĩ, ±ĨÈÝž±ûžμ±Ĩ^ μ̃ ûžž, ħ ĨС" žμ. " О
- ▶ +С™μ̃ Ĩ≈̃ μûžĨμžμ' žÈ, Ĩû" Ĩᵇ' È· μĨĨᵇ ħ μ̃Ĩ" ÝμО



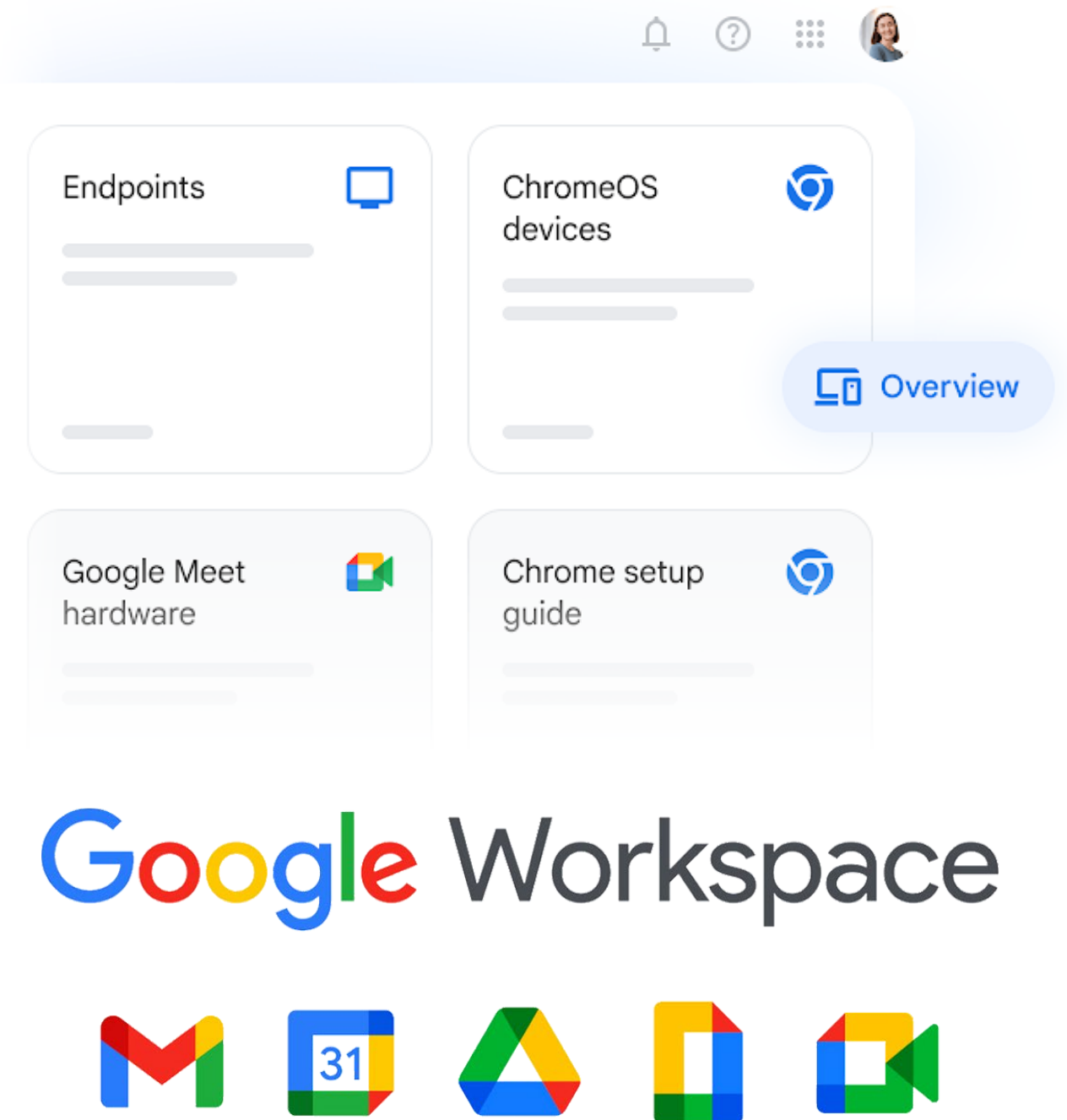
**OK, I get it – but  
what can I do?**



# Google Workspace User Management

---

- Centralized user management through a single admin console for all users, devices, and applications
- Quick onboarding and offboarding of employees with automated account provisioning and deactivation
- Easy password resets, MFA enforcement, and security policy management to improve account security
- Simplified management of email groups, shared drives, calendars, and collaboration tools





# Don't Believe Me?

q μ ῑ » ῑ È" ÈøžP

NONP

Èøῑ' ῑ ÈÝ, žῑ  
 ῑ È· ῑ È· » μῑžžû' ý" ῑ  
 ῑ û, ῑμῑÈ' ýμ±ῑСῑ ? ῑ

q μ ῑ ῑ μžμP

NHP

Èøῑû, " È· F û ῑμῑ  
 3/4' ž» " ῑ, 3/4" ž; ûžμ±ῑ  
 ±»±ῑÈžῑ" μῑ ? ῑ

xÈÝ' μ" ῑžž " ББ F F O » ῑ È" ÈøžÈ· Бμ' Ý»СЫЕ; ББВЛНБМБЕБÈ, μЯ» ^ Фῑῑ' žÈ, ЯСÈÝЯ û, ЯèýμЯÈЯ ῑμ³/4, žЯNNЯЯ μ ῑ μ, žЯÈøῑ' ῑ ÈÝ, žῑžžû' ý" Б



# Do you have your .GOV ?

---



.GOV only available to U.S. Based Organizations



Cybersecurity and Infrastructure Security Agency (CISA), verifies and manages all .GOV domains.



Federal, state, local, and other publicly-controlled entities are eligible for .GOV (FREE)

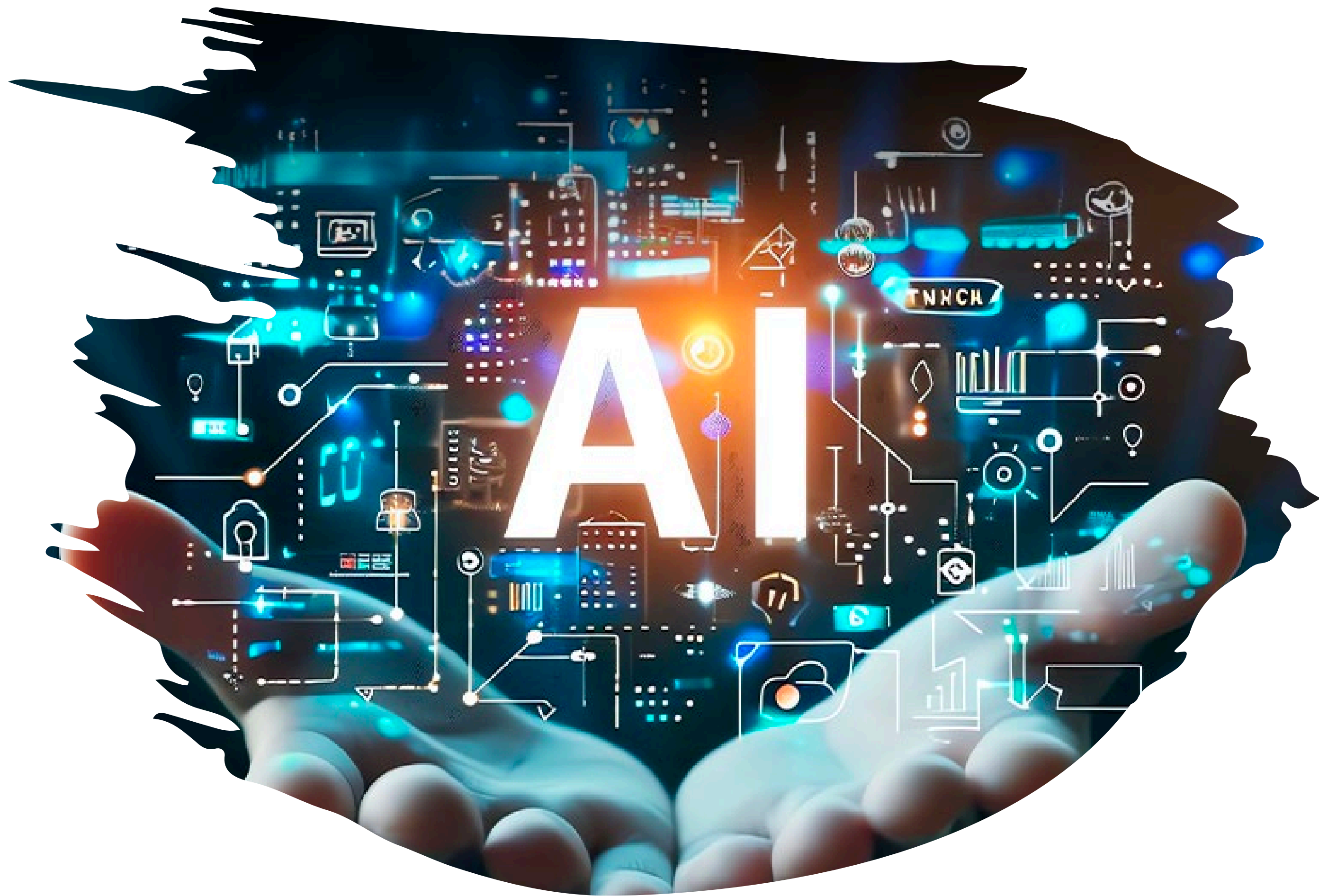


Grant Funding Opportunities require a .GOV

**VC3 has migrated and supported many organizations migrate from a .com Domain to .GOV**

Visit [get.gov](https://get.gov) And Enroll Today!





# Using AI the Right Way

RESPONSIBLY. ETHICALLY. EFFECTIVELY.



## Be Transparent

Clearly communicate when AI is being used.



## Respect Privacy

Protect data and use AI responsibly.



## Be Fair and Unbiased

Strive for fairness and minimize bias in AI outputs.



## Verify and Validate

Always review AI-generated information for accuracy.



## Keep Security a Priority

Use AI tools securely and follow best practices.



## Use AI to Add Value

Leverage AI to enhance human work and drive positive impact.





# AI Best Practice

---

## 1. Establish an AI usage Policy Internally:

- Define what employees can and cannot upload.
- Create approval processes for legal, HR, compliance, and security documents.
- Train staff on prompt hygiene and data handling.

## 2. Remove or Anonymize Sensitive Data before Uploading:

- Customer names
- Employee information
- Financial account numbers
- Contracts
- Trade secrets
- API keys, passwords, or credentials
- Regulated data (CJIS, HIPAA, PCI, export-controlled, etc.)

## 3. Verify Outputs:

- AI can introduce inaccuracies or omit important context.
- Human review is required for legal, financial, compliance, or executive-facing material. **(REALLY EVERYTHING)**



# How Municipalities Are Adding AI

---

è ≈ û ž Ĩ Н μ € ů ž μ ± Ĩ, ¾ μ " ž · μ, ž " Ĩ ≈ È Ý € ± Ĩ Ѓ Ѓ  
· Ý, » » û € ž Ѓ μ Ĩ € ů, , », ĩ Н, ХИ

- ▶ X' μ, " » ĩ Н È Ĩ Н È F μ ~ μ ± Ĩ ~ È ± Ý' ž ¾ ž Ѓ È È €
- ▶ Н μ, ≈ û, ' μ ± Ĩ Ѓ μ ~ μ' Ý » ž Ѓ Ѓ È, » ž È » ĩ
- ▶ Н ± » ¾ μ, Ĩ û ž û Ĩ, û € ž » " Ĩ € ů ž È · " Ĩ, ± Ĩ û ž û Ĩ È ¾ μ ~, û, ' μ
- ▶ + ≈ û ž μ È ž " Ĩ, ± Ĩ » ž Ý û € " " » ž û, ž " Ĩ È Ĩ μ " » μ, ž Ĩ, ĩ û ĩ μ · μ, ž
- ▶ Н ž μ ĩ ~ û ž È, " Н » ž ~ » Ĩ » ž » ĩ Ѓ Ѓ ž μ · "
- ▶ x ž û A Ĩ û » » ĩ Н, Ĩ Н È È € Ĩ, ± Ĩ μ " ^ È, " » μ Ĩ μ
- ▶ q » È ž Ĩ Ý, ± » ĩ Н È Ĩ Н Ĩ " μ Ĩ û " μ



# How Municipalities Are Adding AI

ИИ ≈ μ' ÿ €» žP

- ▶ ^ » ~È" ÈøžЙÈ^ »ÈžЙ' €Ý±μ±Й" Й û~žЙøЙСÈÝ~Й » ~È" ÈøžЙКЙ Й €» μ, " » ž O
- ▶ , Й Йμ, ≈û, ' μ±ЙøЙЙÈÈ€Й" Й û~žЙøЙСÈÝ~ЙøЙЙÈøžF û~μЙ €» μ, " » ž O
- ▶ ±±žÈ, û€ЙÈÝ±ЙÈ· ^ Ýž» ž Й, ±ЙžÈ~ûžμЙÈ" ž" Йμ~ Ý»μ±Й žÈЙ" μЙ^ μ' »€̄ μ±Й ЙЙÈÈ€ Й Ý ≈Й" ЙÈ~Й ûа ' Й, û€" » ЙÈ~Й F ûžμ~Й û, ûžμ· μ, žKO
- ▶ Й³/μ" ž· μ, ž" Й Й»ž ≈Я^ μμ±Й™Èû±™, ±ЙЙ™~ЯÈ^ ž» Й , μžF È~ÿ" ЙЙ @ЙЙ, ±ЙμžF È~ÿЙμ±Ý, ±û, ' СЙ ÝμЙÈЙ~μЙž žμЙ ±ûžûЙ û, " øμ~ Йμ~ Ý»μ±ЙСЙ Ю
- ▶ 1 ûžûЙ€û, Ý ЙЙ û» žμ, û, ' μЙЙ, ±Й û, ûžμ· μ, žЙÈ" ž" Й й™' ûÝ" μЙ ЙЙμ~ Ý»μ" Й€û, ЙЙž Ý žÝ μ±ЙûžûKO
- ▶ ~û» » ž ЙÈЙμžЙ· ^ €Сμμ" Й ЙÈЙ^ μμ±ЙÈ, Й ЙЙÈÈ€ Й, ±Й " ÈÈÝžÈ, " O
- ▶ qûž, μ" ≈» " Й »ž~Йμ, ±È~" Й~È³/»» ž Й ЙЙÈÈ€žÈ, " O
- ▶ +È" ž" ЙÈ~ЙÈÝž" »μЙÈ, " Ý€û, ž" O





Questions?